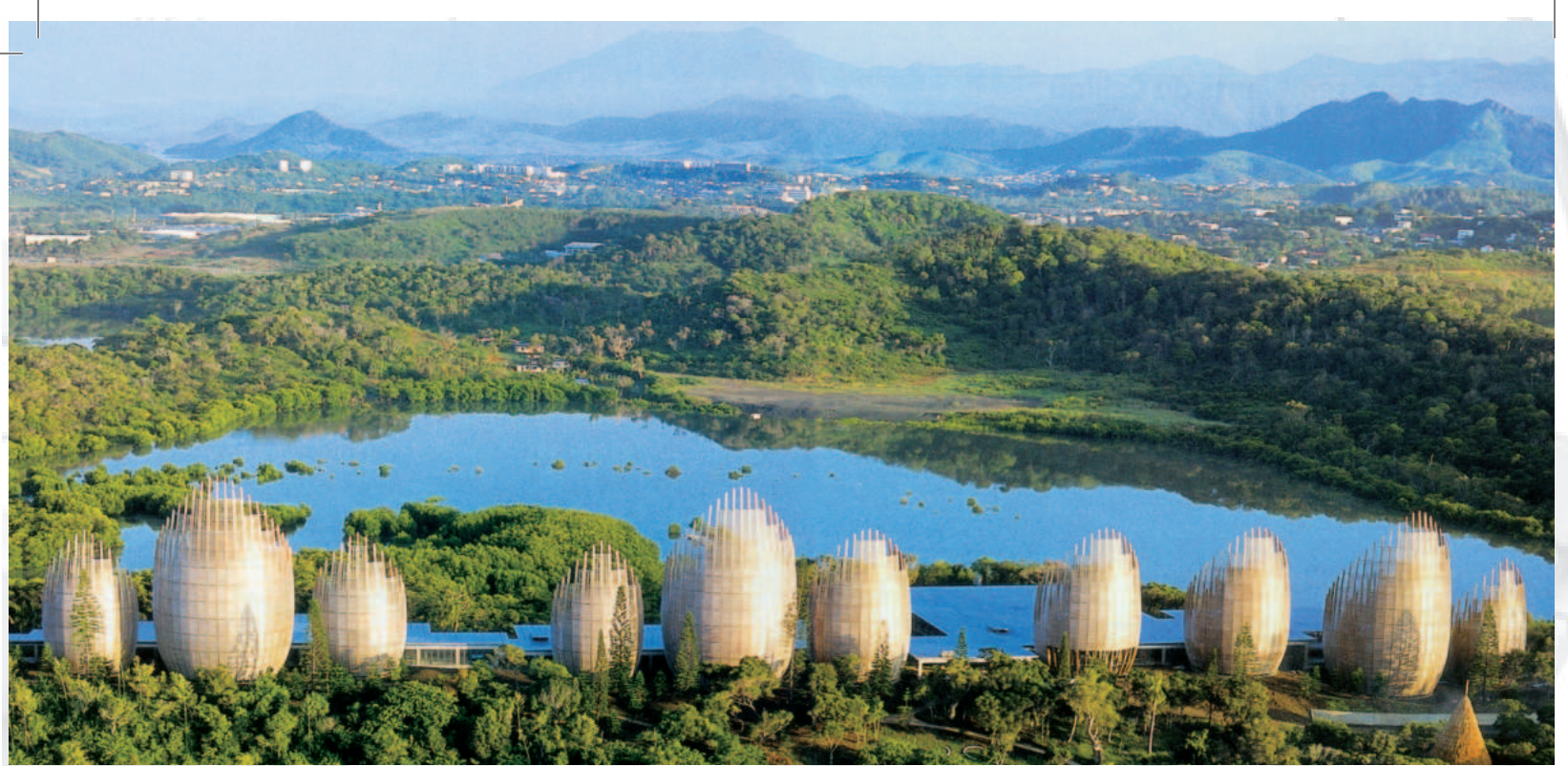




FUTURE IS MADE OF MET CHALLENGES.





Culturelle centre in Nouméa (New Calédonia)

Architect : Renzo Piano

KNOW-HOW

Our relationship with wood has been ongoing for 2 centuries : a story driven by our passion for innovation as well as a sincere and demanding human adventure. This story is perfectly connecting with the world we have in front of us.

Wood is at the center of tomorrow's challenges : environmentally friendly, efficient and remarkably warm. For us, it's much more than an answer to new regulations : It represents a precious opportunity to work for a new vision of construction.

Design, manufacture, construction, iconic structure or building on a human scale, every new project is an invitation to push back our limits. Every achievement is a testimony of our commitment to continuous improvement..

MATHIS - future is made of met challenges.

Head Office of the Office National des forets at Maison Alfort - 7 650 m²

Architects : Vincent Lavergne – Atelier WOA





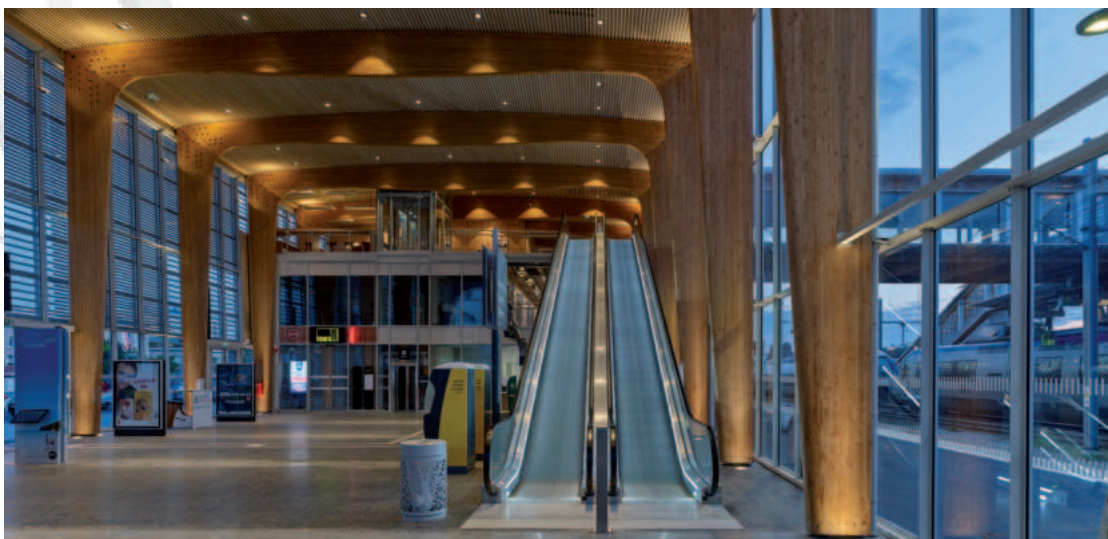
Strasbourg Exhibition center

Architect : Kengo Kuma Associates



Swimming pool in Les Ulis

Architect : Cabinet Mimram



Lorient high speed train station

Architect : AREP



Arboretum office building in Nanterre - 125 000 m²

Developer : WO2

Architects : François Leclercq – Nicolas Laisné – Dimitri Roussel

OFFICE BUILDINGS

Performance at work and a company's economic success necessarily depend on the well-being of employees. Timber takes care of their well-being and quality of life. Several studies show that the absenteeism rate is reduced by around 30%.

MATHIS builds the professional living spaces of tomorrow, using innovative construction systems, creating comfortable buildings of high environmental quality in compliance with thermal, acoustic and safety rules.

Since timber buildings are well regarded by the population, elected officials encourage their construction.



Enjoy office building in Paris - 13 600 m²
Developer : Bouygues immobilier
Architects : Baumschlager Eberle - Scape



Le Themis office building in Paris - 5 600 m²
Client : Foncière Icade
Architect : Corinne Vezzoni & Associés



Stream Building in Paris - 21 600m²
Developer : Covivio
Architect : PCA STREAM Philippe Chiambaretta



Head office of the French olympic comitee in Saint denis - 21 600m²
Client : Foncière Icade
Architect : BFV Architect



Ywood business Building in Marseille - 3 700m²
Client : Nexity
Architect : Carta Associés

Michelin head office reception in Clermont-Ferrand

Architect : Encore Heureux Architectes





104 units residential building in Issy-les Moulineaux

Client : Seine Ouest Habitat

Architect : Atelier Brenac Gonzalez et Associés

RESIDENTIAL BUILDINGS

Climate, environmental, urban and ecological challenges make timber construction the logical solution for the sustainable cities of tomorrow.

MATHIS guides and advises project owners and project managers from the initial design stage, in order to facilitate projects and industrialize real estate programs as much as possible, thereby guaranteeing the best product.

Thanks to its high-performance construction systems and its state-of-the-art industrial machinery, MATHIS guarantees the quality of the finished product and orchestrates the process to reduce the time it takes to carry out your operations by 50% compared to conventional **construction**.

104 social housing units Ris Orangis

Developer : Woodeum

Architect : Wilmotte et Associés





175 units residential building in Rueil-Malmaison - 10500m² Developer : Woodeum Architect : Wilmotte et Associés



7 building of the olympic villages



175 units student residence building in Saint Denis Client : House of Education of the Legion of Honor Architect : Belus & Henocq



Jet Aviation's maintenance hangars at Basel-Mulhouse Euroairport - 18 000m²

Design engineer : OTE Ingénierie

INDUSTRIAL BUILDINGS

So many advantages are offered by our timber construction solutions: energy savings, rapid execution, warm working environment and increased company profile.

MATHIS timber construction systems provide high-performance solutions for industrial and logistics buildings combining solidity, fire safety, corrosion resistance, functionality and aesthetics. MATHIS prefabricates all the timber elements in its factory to guarantee you the best lead times.

Waste collection centre in La Veuve - 31 800m²

Architects : S'Pace, SEPOC





RATP maintenance center in Vélizy-Villacoublay - 2 900m²
Architect : RATP Engineering Department



EDF storage platform in Velaines - 42 400m²
Architect: RTR Architectes



Energy conversion center in Halluin - 19 000m²
Architect: Cabinet Urba Linea



Sulfur storage in the United Arab Emirates - 40 000m²
Customer : ADNOC





Shopping mall in Sarrola Carcopino - 61200 m²

Architect : Kase Architecture

RETAIL SPACES

MATHIS glulam and timber structures are particularly suitable for building commercial spaces, hypermarkets and supermarkets due to their high fire resistance, the architectural possibilities they offer and the speed of construction.

Our expertise in mixed timber solutions also allows us to offer you economical timber/ concrete or timber/metal solutions.

MATHIS works for the key players in retailing with a strong focus on deadline and price.

Marques Avenue mall in Aubergenville - 15000 m²

Architect : C. Vergnaud Architecture & Associés





Supermarket in Saint-Bonnet-de-Mure - 5 600 m²

Architect : DWA



Altermove store in Marquette-Lez-Lille - 2 300 m²

Architect : P. Coppe



Qwartz shopping mall in Villeneuve la Garenne - 35 000 m²

Architect : ZUO Architecture



Olympic Aquatic Center - Saint-Denis

Architects : VenhoevenCS & Ateliers 2/3/4/

SPORTS AND RECREATION

MATHIS has forged a solid reputation in the field of sports and recreation by offering timber construction systems that guarantee controlled construction and operating costs, as well as very short deadlines.

Gymnasiums, indoor tennis courts, dojos, swimming pools, water parks, velodromes, stadiums, a wide range of buildings... MATHIS sports and recreation buildings have benefited from the **principles of the High Quality Environmental (HQE) approach for more than 20 years.**

Indoor soccer field in Laval - Canada

Architect : J.C. Baudry





Gymnasium of the suchet sport complex, Paris

Architect : KOZ



Roof of the furiani stadium in Bastia

Architect : Atelier Ferret Architectures



Aquatic center in obernai

Architect : Octant Architecture



ENSIBS engineering school in Lorient

Architect : Agence Nicolas Michelin & Associés

EDUCATION

MATHIS is a recognized constructor in the education and training sector, building schools, colleges, universities, libraries and media centers.

Our expertise in timber construction allows us to offer you “All Timber” construction solutions in glulam, CLT, timber frame or timber ribbed panels, but also mixed timber/concrete or even timber/metal solutions.

We can also act as a timber general contractor, guaranteeing you control of construction and operating costs, in compliance with deadlines and current standards.

The Camp university campus in Aix en Provence

Architect : Corinne Vezzoni et Associés





ECAM engineering school in Schiltigheim

Architect : ARX Architecture



House of Education of the Legion of Honor in Saint Denis
Architect : Belus & Henocq



Secondary school in Plescop

Architect : AIA Associés



COMPONENTS AND SYSTEMS

For more than 200 years, MATHIS has been innovating. MATHIS is a leader in timber construction and glued laminated structures, offering new concepts to make all your projects a reality.

Economical, ecological, low energy consumption, quick to build, MATHIS products are at the forefront of innovation and design, to meet all requirements, from the simplest to the most sophisticated project.

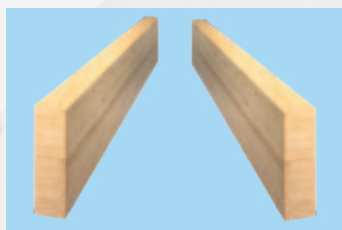
MATHIS offers the best quality labels, equivalent to ISO 9002 in the timber industry, and guarantees the use of timber from sustainably-managed forests, as close as possible to our factory.



Cutting-edge innovative products

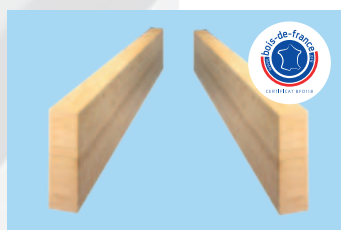
ACERLAM®

Universal glued laminated timber



AMILAM®

Le bois lamellé-collé.
Bois de France



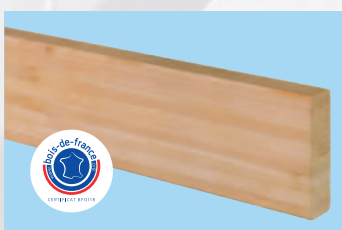
COLORLAM®

Feature glued laminated timber



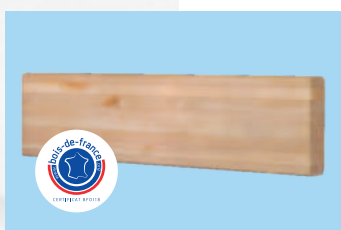
ÉCOLAM®

Eco-friendly glued laminated timber



REDLAM®

Character glued laminated timber



MAXILAM®

More than 20 types (from 41 x 127 mm to 840 x 2,046 mm)



FERBOIS®

Connecteurs métalliques peints ou galvanisés



DALBOIS®

Solid panel in wall, roof and floor



AZUREL

High performance timber frame



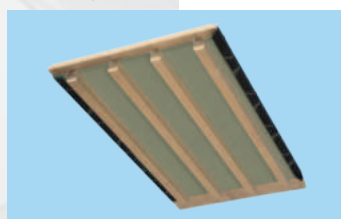
AZURTEC - PNM®

Long span timber floor



AZURTEC®/PLACO® FLOOR

The long span floor system with unique fire resistance performance



AZURTEC - MNM®

Ribbed wall for great height



AZURTEC®/PLACO® WALL

The complete load-bearing facade system for high-rise buildings



CTB
CERTIFIÉ PAR PCBA
COMPOSANTS &
SYSTÈMES BOIS



Acerbois
QUALITÉ FRANÇAISE CERTIFIÉE





TRADITION & INNOVATION

Through the generations, by turns entrepreneurs, sawyers, carpenters and industrialists, MATHIS has been passing down its passion for timber and the tradition of fine workmanship since 1809. It considers people as its main asset, at the center of its development.

MATHIS has created an innovation culture: a large number of specialized engineers, often award- winning products and projects, real know-how in the dry construction sector and authentic expertise in mixed timber/metal construction.

As a leader in timber and glulam construction, MATHIS has based its reputation on its quality system, its respect for costs and deadlines - in a word, its seriousness.

2

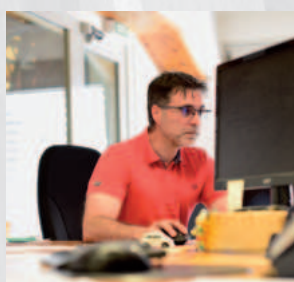




4



5



6



7



8



9



10

3



1

- 1 : Lifting
- 2 : Timber frame
- 3 : AZURTEC® manufacture
- 4 : Bonding hall
- 5 : Laboratory
- 6 : Design office
- 7 : Raw material storage
- 8 : Laser cutting
- 9 : Straight machining robot
- 10 : AZURTEC® press





Arboretum office building in Nanterre – 125 000 m²

Developer : WO2

Architects : François Leclercq – Nicolas Laisné – Dimitri Roussel

The MATHIS group has many references in France,
but also in Canada, China, the Middle East, The Maghreb and Africa.
MATHIS can help you define your project and assist you with its
technical and economic development. Our experience guarantees you
the best solutions at the best price, within the agreed deadlines.



FUTURE IS MADE OF MET CHALLENGES

www.mathis.eu

Mail : siege@mathis.eu Tel. +33 3 68 08 00 08